

Type the Title of Your Paper in Upper and Lower Cases in Bold and Centered (18 point)

Type the author's and co-author's full name(s) in bold and centered (12 point) Type the author's and co-author's affiliation(s) in bold (12 point)

Type contact address
City, State, Zip code, COUNTRY
Phone: (country and area codes) numbers
Fax: (country and area codes) numbers
E-mail: e-mail@address (10 point)

An abstract is required for each paper. Type the abstract after your mailing address. The left and right margins of the abstract are 35 mm and justified without the heading of ABSTRACT. Try to limit to 100 words which should contain the objectives and significance of the paper, method of analysis, and conclusion. (10 point).

Topics / Type the relevant symposium topics here, centered (10 point)

1. INTRODUCTION (10 POINT)

This document is prepared in the format that should be used in your paper. To ensure uniformity of appearance for the proceedings, your paper should conform to the following specifications.

The official language of AVEC '08 is only English and **manuscript must be written in English.**

Manuscript should be created as "publication-ready" PDF or DOC. Your paper will be included in the proceedings exactly as typed. The AVEC '08 organizing committee recommends to submit your manuscript in PDF format with fonts embedded

2. PAPER SIZE

Your manuscript should be prepared on **210_297 mm (A4)** white paper in two columns in Times or equivalent font. Your paper should not exceed **6 (six) pages** in length. Papers of keynotes should be **8 (eight) pages** in length at maximum. On the first page, the distance from the top edge of the paper to the title of your paper should be **30 mm**. On the second and subsequent pages, the distance from the top edge of the paper to the top of the first line should be **20 mm**. The left and right margins should be **20 mm**, and the bottom margin should be at least **25 mm**. The width of each column should be **80 mm**. The distance between the two columns of the text should be **10 mm**.

3. PAPER TITLE

The exact title of your paper in upper and lower cases should be centered across the top of the first page and should be in **18-point** size.

4. AUTHOR INFORMATION

The authors' names and affiliations should be centred below the title. Do not include author's title (Prof., Dr.), position (president, research engineer), or degrees (ph. D., M Sc., M. E.). The contact address should be centered below the authors' names.

5. TOPICS

Each paper should include **at least one and at most three symposium topics**, according to the list of topics as used for AVEC '08 (see website). Start with "Topics/Axxx, Bxxx, --". These lines should be in 10 point size.

6. BODY OR PARAGRAPHS

The body of your paper should be in **10 point size and single spaced**. Do not double space between paragraphs. Indent the first line of the each new paragraph. Use full justification.

7. MAIN HEADING

There are two types of headings. A main heading should be numbered consecutively and typed in all capital letters, bold, and flush to the left margin with one line of space above and below.

7.1 Sub-Heading

A sub-heading within a section should be also numbered consecutively, and typed in upper and lower case letters, bold. Do not leave a line of space above nor below.

8. HEADER

Include the text "AVEC '08" at the right upper corner of each page, and flush to the left margin. (10 point)

9. CONCLUSION

Here is the Conclusion paragraph. State your major conclusions of your work here.

REFERENCES

Here is the reference section. The heading of this section should be "REFERENCES", all capital letters, flush to the left margin. List and number all references at the end of the paper. When citing references in the text, indicate the author and type the corresponding number in the square brackets as shown at the end of this sentence [1]. Some examples of writing references are as follows:

- [1] Wallentowitz, H. "Integration of Chassis and Traction Control Systems", Proc. of AVEC '92, 1992, pp. 1-9.
- [2] Guo, K. "A study on a Phase Plane Representation for Identifying Vehicle Behavior", Proc. of the 9th IAVSD Symposium, 1985, pp. 10-15.
- [3] Hiramatsu, K. et al., "Driver Model for Lane Change Maneuver-Validity of Programmed Steering Model-", Trans. of JSAE, No. 38, 1988, pp. 16-20. (in Japanese)

APPENDICES

Additional information can be included in appendices. This is an optional section.

Footnotes

Each footnote must be inserted at the bottom of the column in which its reference appears. Designate each such reference in the text with an asterisk (*), not a number. Use double asterisks if two footnotes occur in the same column.

Figures and Tables

All figures (line drawings, graphs) and tables should be referred in numerical order in the text. Figures should be typed as "Fig. 1", with captions appearing beneath the figure. Tables should be typed as "Table 1", with headings appearing above the table. Tables may be typed in the manuscript in single- or double-column format. Return to the double-column format for text following a table extending across both columns. An example of a table is as follows:

Table 1 Vehicle System Parameters

body mass	m_b	1.43×10^3 kg
body roll moment of inertia	I_{roll}	5.00×10^2 kgm ²
body pitch moment of inertia	I_{pitch}	2.50×10^3 kgm ²
tire vertical stiffness	k_t	2.00×10^5 N/m
front wheel mass	m_f	25 kg
rear wheel mass	m_r	35 kg

An example of a figure is shown below.

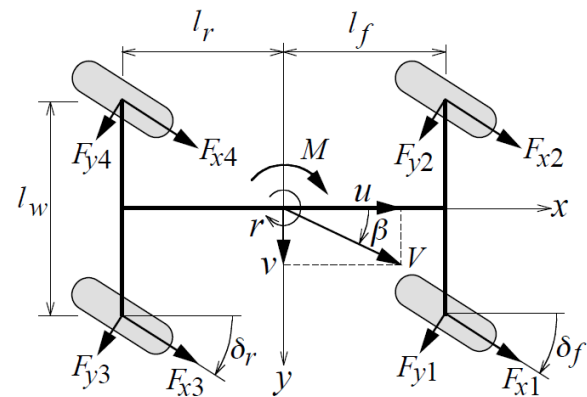


Fig. 1 Vehicle Model

Plan graphs and line drawings so that they may be reduced to a single column or double column and remain legible. All line weight should be nearly uniform to avoid deterioration of thinner lines. Identify curves by labeling or different types of lines. Each illustration must have a number and a caption typed directly beneath it. Lettering in the graphics must be in English and should be legible. Avoid color graphics as they do not reproduce well in printing. However, the proceeding CD is in color.

Equations

Center all equations approximately in the column, using accepted rules for splitting if the equation is too long to fit on one line. Equations should be numbered consecutively with the number enclosed parenthesis, flush right-hand margin. An example of an equation is as follows:

$$\left\{ mVs + 2(K_f + K_r) \right\} \beta + \left\{ mV + \frac{2}{V} (l_f K_f - l_r K_r) \right\} r = 2K_f \delta_f + 2K_r \delta_r \quad (1)$$

Proofreading

After completing the typed manuscript, make sure to proofread it very carefully. The manuscript will not be proofread by AVEC '08 Organizing Committee. Please check that every figure or table reference in the text has a corresponding figure or table. Check that every figure and table has a caption.

AVEC '08

Electronic Submission

Your paper in PDF or DOC format should be sent to AVEC '08 Organizing Committee through the AVEC Web site. If online submission is not available, please send the paper by E-mail to the following:

AVEC '08 secretariat

E-mail: avec08@intergroup.co.jp

Deadline for submission of the paper is July 1, 2008.

Copyright Transfer

When you have completed your paper, please fill out the AVEC '08 copyright transfer form and return it to AVEC '08 Organizing Committee. Please scan the form with your signatures and send it (in JPG or PDF) by the AVEC Web site. Or you can use E-mail, fax or regular mail to send the copyright form. If you use E-mail, fax, or regular mail, please send the following:

AVEC '08 secretariat

Address:

Convention-Organizing Dept., Inter Group Corporation, Inter Group Bldg., 3-20-1, Toyosaki, Kita-ku, Osaka, 531-0072, Japan.

Phone: +81-6-6372-8455

Fax: +81-6-6376-2362

E-mail: avec08@intergroup.co.jp

No paper will be included in the proceedings unless the AVEC '08 Organizing Committee has received copyright transfer signed by all authors of the paper.